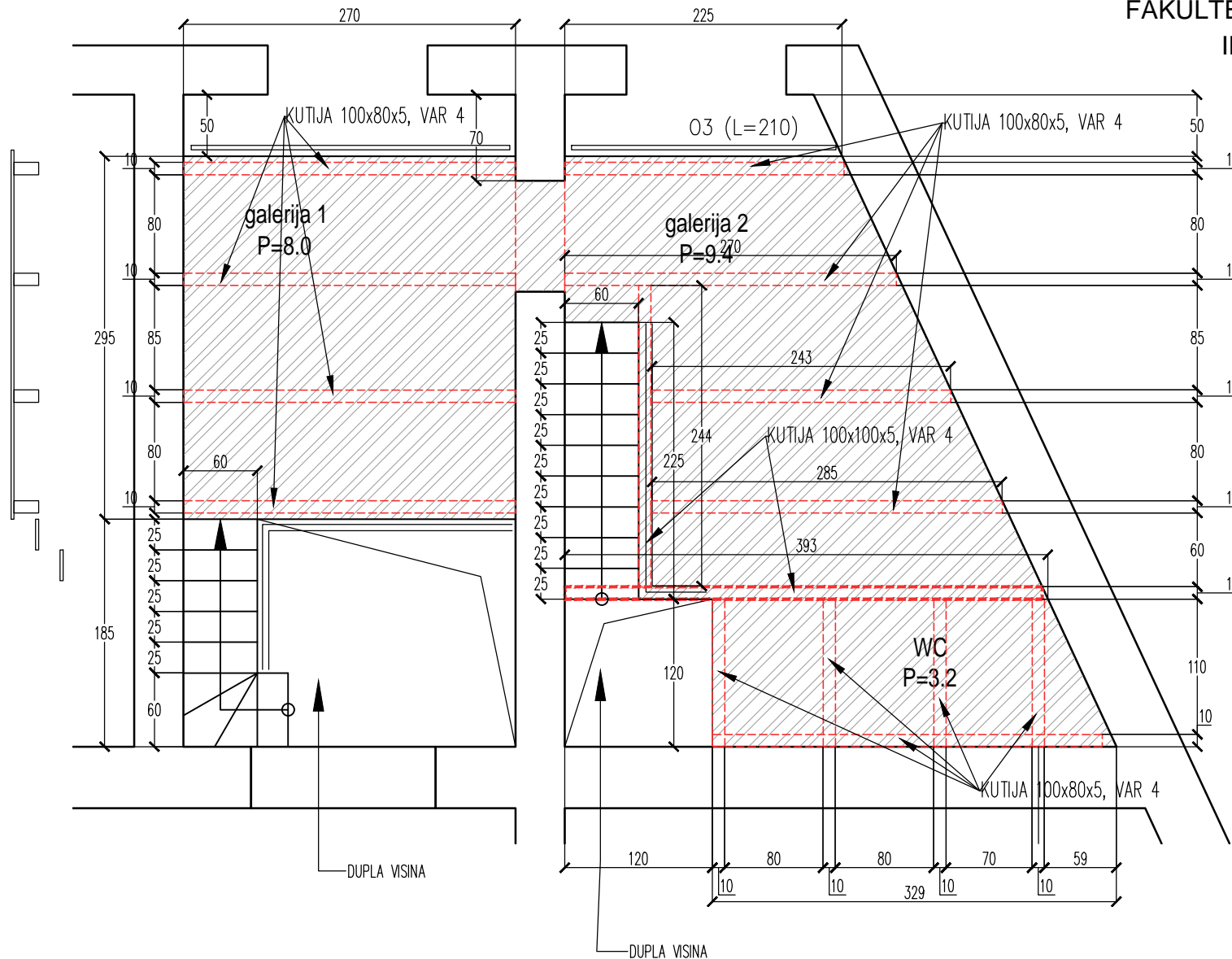


NOVOPROJEKTOVANO

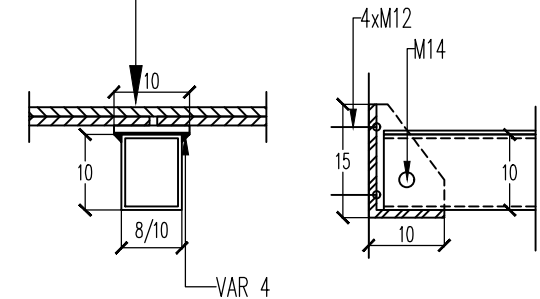
**OSNOVA PRIZEMLJA
KONSTRUKCIJA
GALERIJE**
razmera 1:50



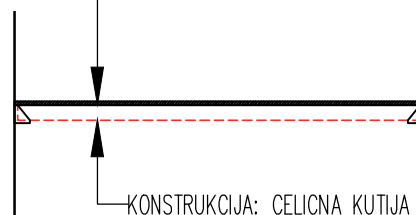
NAPOMENE:

1. SVI NOVI ZIDOWI SU OD GIPSKATRON PLOČA NA METALNOJ PODKONSTRUKCIJI SA ISPUNOM OD TVRDO PRESOVANE MINERALNE VUNE (12.5+12.5+100/75/50+12.5+12.5mm)
2. SVI PREGRADNI ZIDOWI IMAJU VISINU DO PLOČE / SPUŠTENOG PLAFONA
3. U MOKRIM ČVOROVIMA GIPS KARTON PLOČE SU VLAGOOTPORNE
- 4.

1. LINOLEUM
2. 2x12mm (OSB)
3. GUMENA PODLOSKA 100x5mm
4. CELICNI FLAH 5mmx100x5mm
5. CEL.KUTIJA 100mmx80x5mm

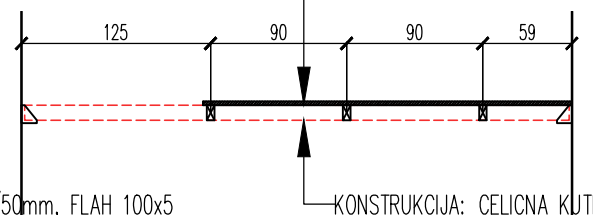


POD: 2xOSB PLOCA (2x12mm)+LINOLEUM



KONSTRUKCIJA: CELICNA KUTIJA 100/50mm, FLAH 100x5

POD: 2xOSB PLOCA (2x12mm)+LINOLEUM



KONSTRUKCIJA: CELICNA KUTIJA 100/50mm, FLAH 100x5

KONSTRUKCIJA:

- KUTIJE 100x80x5
- KUTIJE 100x100x5
- SVI VAROWI SU 4
- VEZA ANKER -ZID 4xM12